

**LOW AIRSPEED AWARENESS SYSTEM - TROUBLESHOOTING**  
**TKS Anti-Ice**

**1. General**

- A. A troubleshooting chart has been provided to aid the maintenance technician in system troubleshooting. Refer to Figure 101.

Figure 101 : Sheet 1 : Pitot-Static System Troubleshooting Chart

A80484

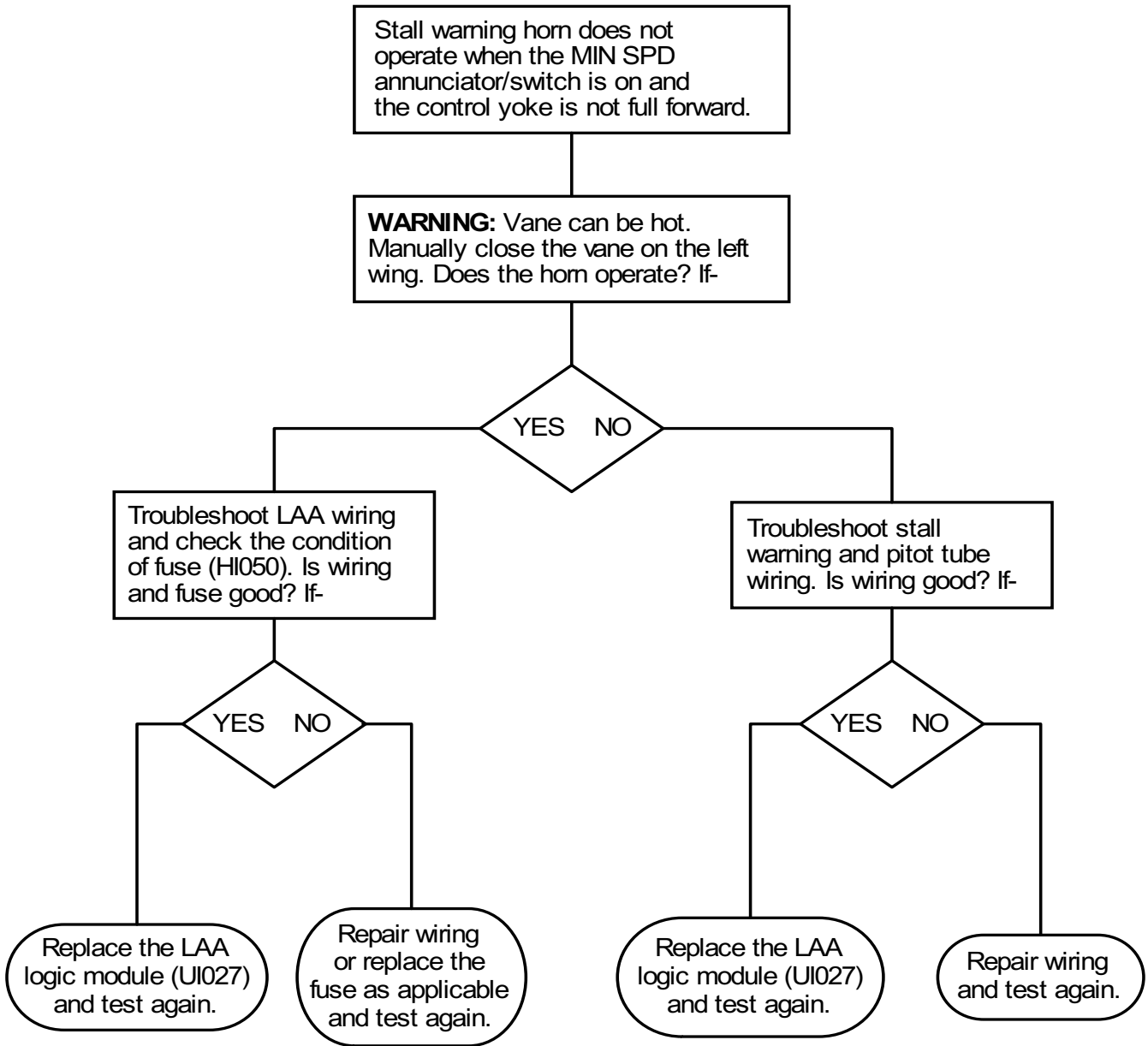


Figure 101 : Sheet 2 : Pitot-Static System Troubleshooting Chart

A80485

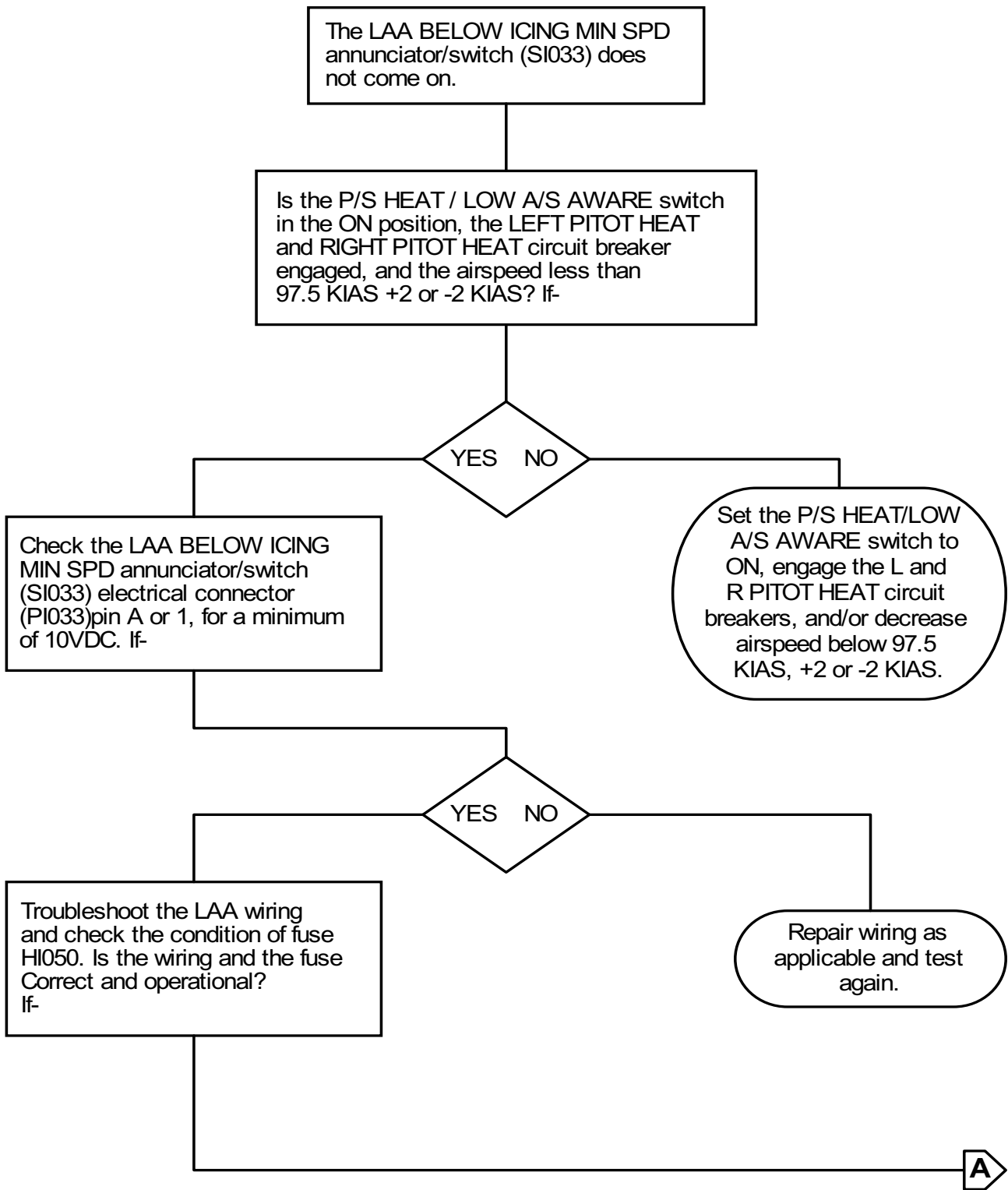


Figure 101 : Sheet 3 : Pitot-Static System Troubleshooting Chart

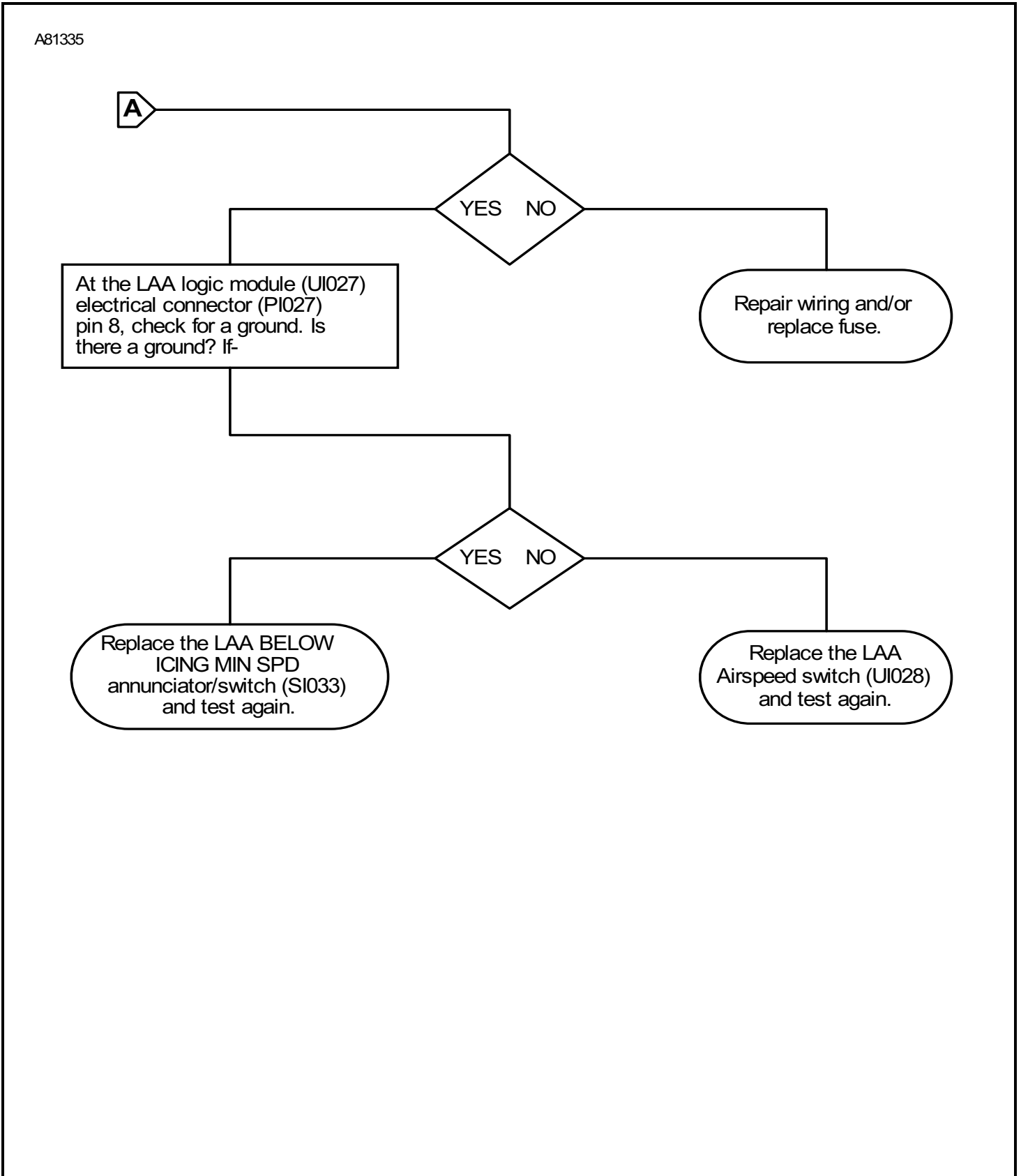


Figure 101 : Sheet 4 : Pitot-Static System Troubleshooting Chart

A80486

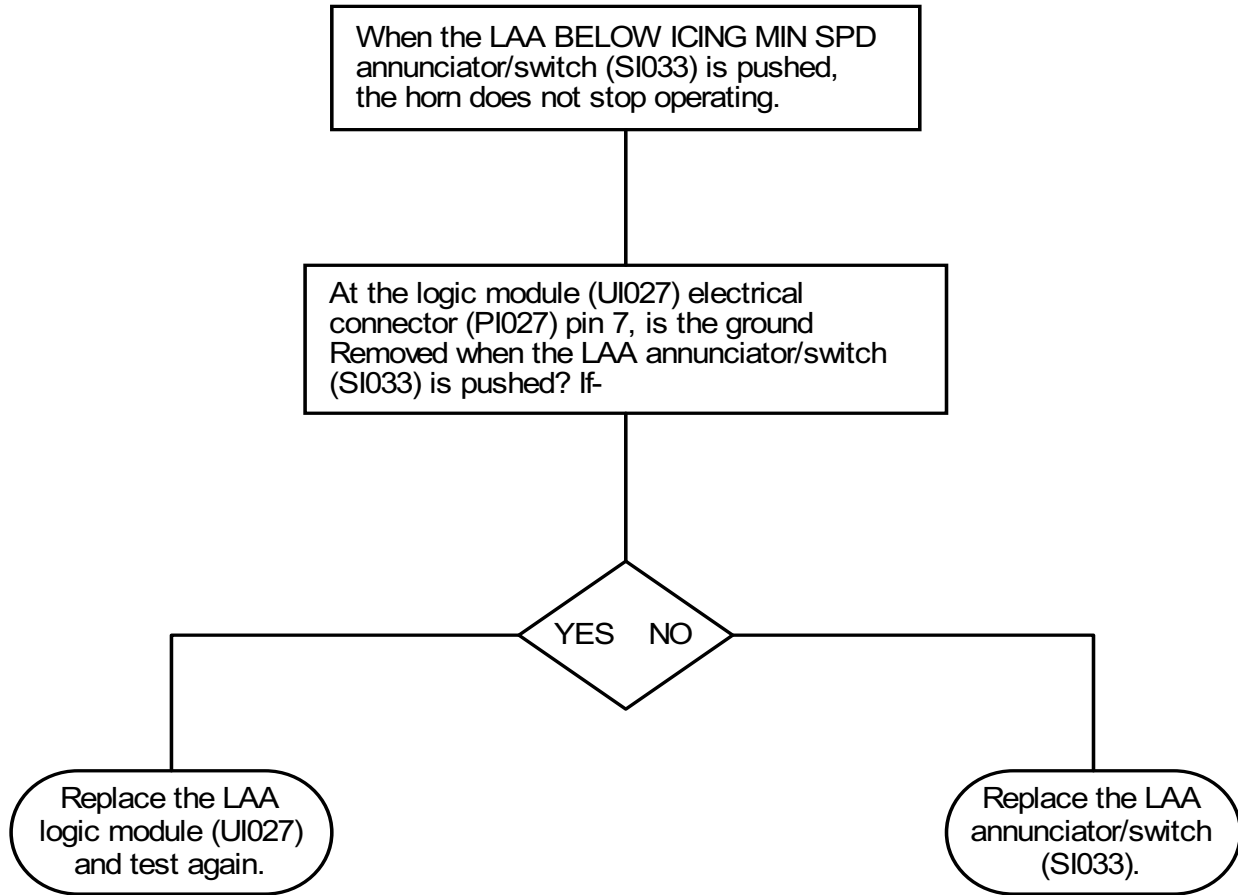


Figure 101 : Sheet 5 : Pitot-Static System Troubleshooting Chart

A80487

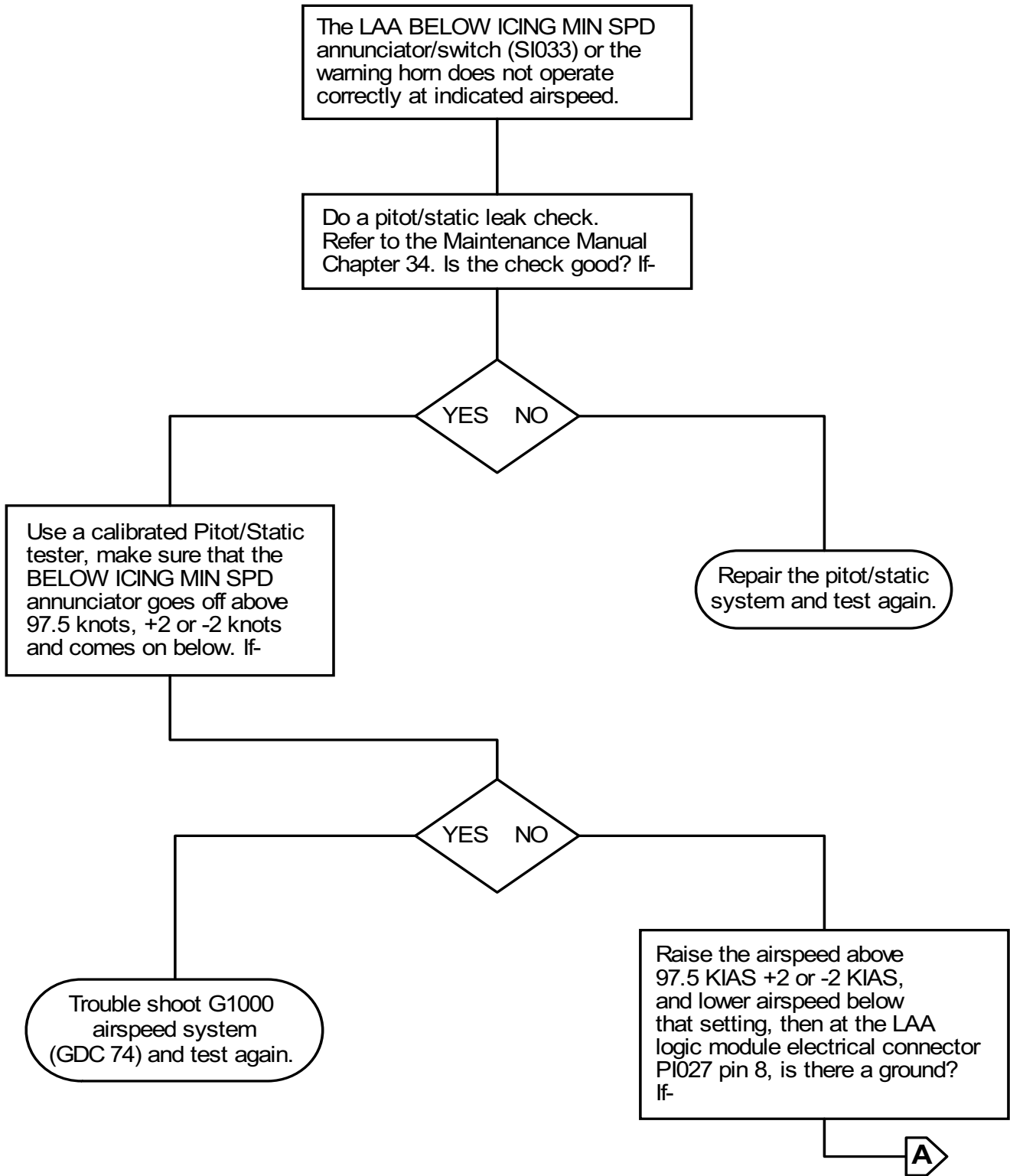


Figure 101 : Sheet 6 : Pitot-Static System Troubleshooting Chart

A81336

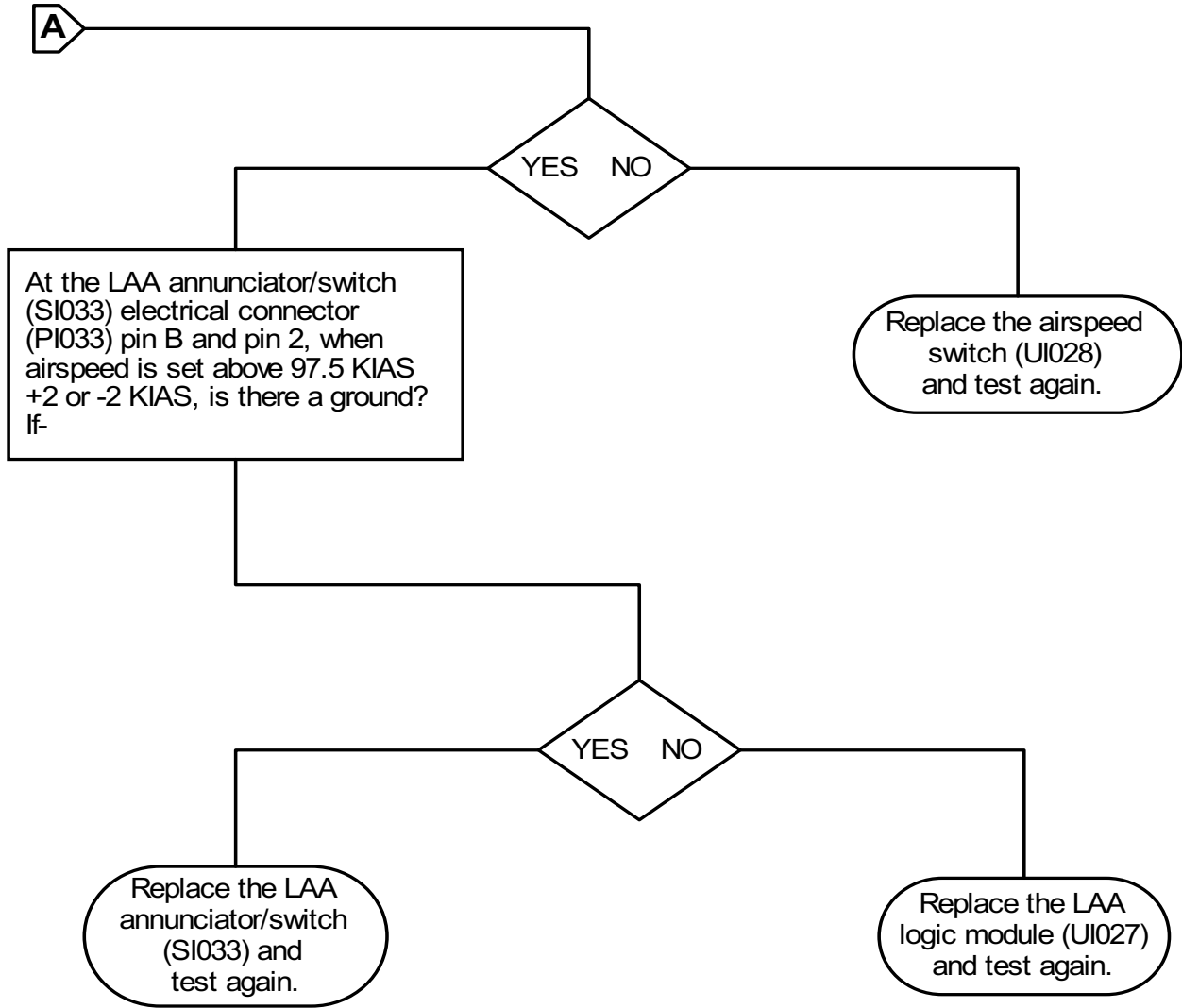


Figure 101 : Sheet 7 : Pitot-Static System Troubleshooting Chart

A80488

